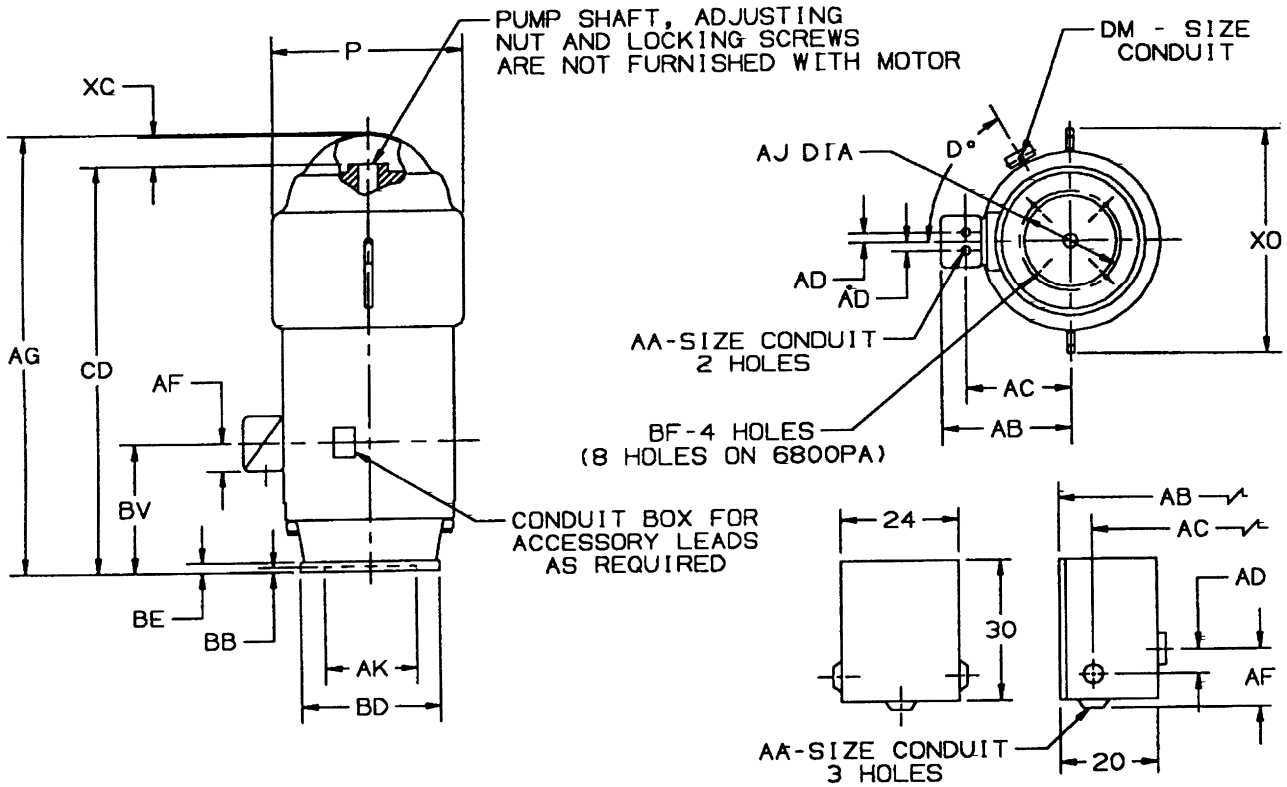


**DIMENSIONS**  
**WEATHER PROTECTED I**  
**FRAME: 6800P, PA**

**TYPE: HU**

**PRINTS**  
**6800**  
**HU**



4000 VOLTS, OVER 1000 HP

ALL DIMENSIONS ARE IN INCHES

FRAME	X0	P	AG	BV	CD	XC
6808	48-1/4	42-1/2	87-9/16	37-1/4	80-1/16	7-1/8
6810			88-9/16	48-1/4	91-1/16	

FRAME	BD	BE	AJ	BF	AK	BB
6800P	30-1/2	1-1/2	26	13/16	22.000	1/4
6800PA	36		32	1	26.000	

FRAME	HP	VOLT	AA	AB	AC	AD	AF	D°	DM
6800	ALL	460	3-1/2	33-15/16	27-5/16	3	10-15/16	60	3/4
	ALL	2300							
	THRU 1000	4000							
	1001 & UP	4000							
				40-13/16	34-13/16	11	17-15/16		

TOLERANCES	22.000 AK	26.000 AK
FACE RUNOUT	.007 F.I.R.	.009 F.I.R.
PERMISSIBLE ECCENTRICITY OF MOUNTING RABBET	.007 F.I.R.	.009 F.I.R.
MAXIMUM SHAFT END PLAY	.010	.010
TOLERANCE ON AK-DIMENSION	+.005	+.007

- ROUGH DIMENSIONS MAY VARY BY  $\pm 1/4"$  DUE TO CASTING AND OR FABRICATION VARIATIONS.
- CONDUIT OPENINGS MAY BE LOCATED IN STEPS OF  $90^\circ$ . STANDARD IS AS SHOWN WITH CONDUIT OPENING DOWN.
- CONDUIT BOX FOR 4000 VOLT MOTORS OVER 1000 HP CANNOT BE ROTATED.



**U. S. ELECTRICAL MOTORS**  
 DIVISION OF EMERSON ELECTRIC CO.

