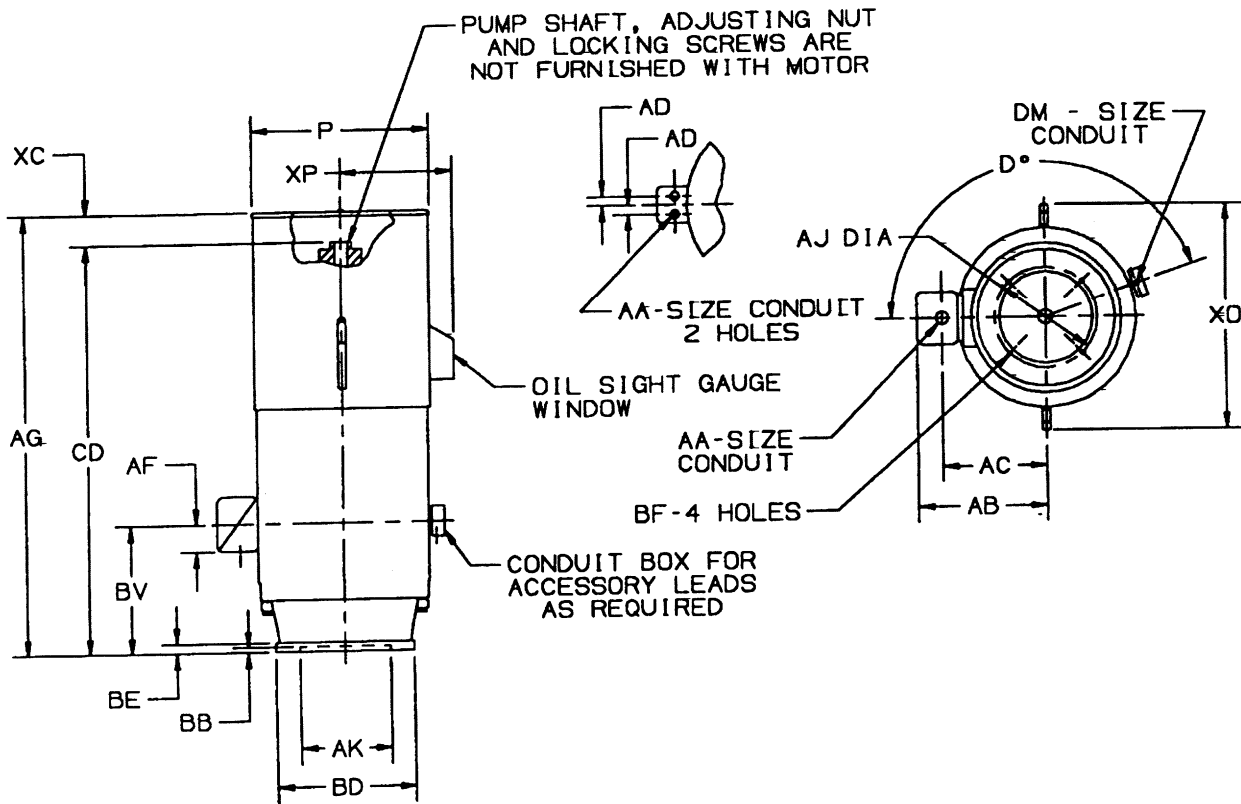


**DIMENSIONS
EXPLOSIONPROOF
FRAME: 5008**

TYPE: EU

**PRINTS
5008
EU**



ALL DIMENSIONS ARE IN INCHES

FRAME	BD	BE	AJ	BF	AK + .005	BB	P	X0	XP
5008P	24-1/2	1-1/4	14-3/4	11/16	13.500	1/4	27-1/2	33-5/8	16-1/2
5008PH	20								

FRAME	VOLTS	AA	AB	AC	AD	AF	D°	DM	AG	BV	CD	XC
5008	460	3-1/2	24	17-5/16	---	5-5/8	157.5	3/4	63-5/8	23-3/4	56-1/2	6-5/8
	2300											
	4000			29-7/8	19-1/2	3						

- ROUGH DIMENSIONS MAY VARY BY +/- 1/4" DUE TO CASTING AND/OR FABRICATION VARIATIONS.
- CONDUIT OPENINGS MAY BE LOCATED IN STEPS OF 90°. STANDARD IS AS SHOWN WITH CONDUIT OPENING DOWN.

TOLERANCES	
FACE RUNOUT	.007 F.I.R.
PERMISSIBLE ECCENTRICITY OF MOUNTING RABBET	.007 F.I.R.
MAXIMUM SHAFT END PLAY	.010



U. S. ELECTRICAL MOTORS
DIVISION OF EMERSON ELECTRIC CO.

