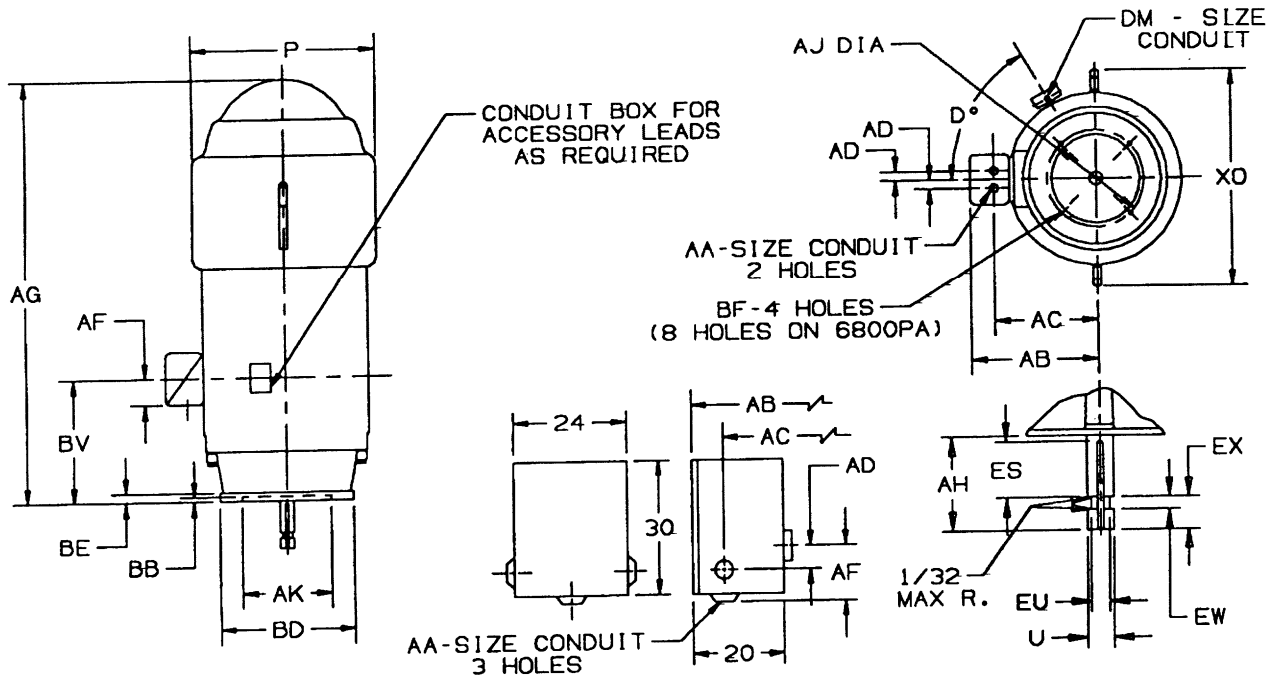


**DIMENSIONS
WEATHER PROTECTED I
FRAME: 6800P, PA**

TYPE: HV-4

**PRINTS
6800
HV-4**



4000 VOLTS, OVER 1000 HP

ALL DIMENSIONS ARE IN INCHES

FRAME	X0	P	AG	BV
680B	48-1/4	42-1/2	87-9/16	37-1/4
6810			98-9/16	48-1/4

FRAME	BD	BE	AJ	BF	AK	BB
6800P	30-1/2	1-1/2	26	13/16	22.000	1/4
6800PA	36		32	1	26.000	

FRAME	HP	VOLT	AA	AB	AC	AD	AF	D°	DM
6800	ALL	460	3-1/2	33-15/16	27-5/16	3	10-15/16	60	3/4
	ALL	2300							
	THRU 1000	4000	40-13/16	34-13/16	11	17-15/16			
	1001 & UP	4000							

HP	POLES (RPM)				U	AH	ES	EU	EX	EW	SQ
	4(1800)	6(1200)	8(900)		-.001	±.062	MIN	-.005	-.005	+.002	KEY
HP	ALL THRU 800	ALL THRU 500	ALL THRU 400		2.875	7.000	5.000	2.375	1.000	.500	3/4
	900 THRU 1000	600	450 THRU 500		3.125	7.000	5.000	2.625	1.000	.500	3/4
	1250 THRU 1750	700 THRU 1500	600 THRU 1250		3.875	7.500	5.500	3.375	1.000	.500	1

HP	POLES (RPM)				U	AH	ES	EU	EX	EW	SQ
	10(720)	12(600)	14(514)	16(450)	-.001	±.062	MIN	-.005	-.005	+.002	KEY
HP	ALL THRU 300	ALL THRU 250	ALL THRU 200	ALL THRU 200	2.875	7.000	5.000	2.375	1.000	.500	3/4
	350 THRU 400	300	250	250	3.125	7.000	5.000	2.625	1.000	.500	3/4
	450 THRU 800	350 THRU 600	300 THRU 500	300 THRU 500	3.875	7.500	5.500	3.375	1.000	.500	1

TOLERANCES	22.080 AK	26.000 AK
FACE RUNOUT	.007 F.I.R.	.009 F.I.R.
PERMISSIBLE ECCENTRICITY OF MOUNTING RASSET	.007 F.I.R.	.009 F.I.R.
PERMISSIBLE SHAFT RUNOUT	.003 F.I.R.	.003 F.I.R.
MAXIMUM SHAFT END PLAY	.010	.010
TOLERANCE ON AK-DIMENSION	+.005	+.007

- ROUGH DIMENSIONS MAY VARY BY ± 1/4" DUE TO CASTING AND OR FABRICATION VARIATIONS.
- CONDUIT OPENINGS MAY BE LOCATED IN STEPS OF 90°. STANDARD IS AS SHOWN WITH CONDUIT OPENING DOWN.
- CONDUIT BOX FOR 4000 VOLT MOTORS OVER 1000 HP CANNOT BE ROTATED.



U. S. ELECTRICAL MOTORS
DIVISION OF EMERSON ELECTRIC CO.

