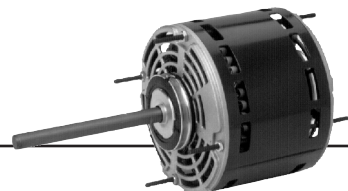


Permanent Split Capacitor Direct Drive Fan & Blower

5.6" Diameter, Open, Air Over, High Efficiency



C-FACE
MOTORS

VARIABLE
FREQUENCY

DRIVES

BRAKE
MOTORS

GENERAL PURPOSE
SINGLE PHASE

HVAC

WASHDOWN

AGRICULTURE

COMMERCIAL PUMP
MOTORS

CLOSE COUPLED
PUMP MOTORS

FIRE PUMP
MOTORS

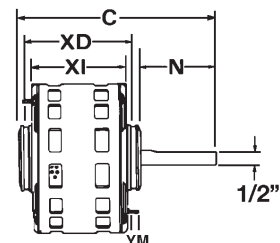
POOL & SPA
MOTORS

APPLICATIONS:

Designed to meet manufacturer's requirements for use on direct drive fans & blowers.

FEATURES:

- Reversible Unless Noted
- Class B Insulation
- Sleeve Bearings Have All Angle Thrust System
- Continuous Duty, Air Over
- Designed For Use With 370V Capacitors
- 36" Line Leads Unless Otherwise Noted
- High Efficiency Economizer® Motors
- Automatic Reset Thermal Overload Protector
- Connection and Capacitor Information Furnished in the Nameplate Data
- When Furnished, the Capacitor and Its Mounting Hardware is Supplied Detached
- 2.5" Dia. Hub Rings Included – See Notes
- **Discount Symbol: DS-3HAC**



Stud or Hub Ring Mount (2.5"), Single Speed

HP	RPM/ Spds.	Volts	Catalog Number	List	Bearings	Cap MFD	Amps	Shaft N	Base XD	Shell XI	Total C	Stud YM	Ship Wgt.	Notes	OEM
1/3	825	208-230	6873	\$267	Ball	5.0	3.0	4.5	6.4	5.8	11.4	N/A	17	1	

Stud or Hub Ring Mount (2.5"), Two Speed

HP	RPM/ Spds.	Volts	Catalog Number	List	Bearings	Cap MFD	Amps	Shaft N	Base XD	Shell XI	Total C	Stud YM	Ship Wgt.	Notes	OEM
1/4	1625/2	460	8944	\$412	Ball	5.0	0.8	6.0	N/A	4.6	10.6	0.8	13		
1/3	1075/2	460	8945	\$472	Ball	5.0	1.3	6.0	5.3	4.8	11.9	0.8	14	3	
3/4	1075/2	460	8947	\$504	Ball	20.0	2.1	6.0	6.1	5.6	12.7	0.8	21	3	

Stud or Hub Ring Mount (2.5"), Three Speed

HP	RPM/ Spds.	Volts	Catalog Number	List	Bearings	Cap MFD	Amps	Shaft N	Base XD	Shell XI	Total C	Stud YM	Ship Wgt.	Notes	OEM
3/4	1075/3	460	8056	\$403	Slv	20.0	2.3	2.5	5.8	5.3	8.4		19	7	LE
1	1100/3	460	2553	\$401	Slv	25.0	3.3	3.5	-	6.8	10.3	N/A	20	5, 7	YK

Four Speed

HP	RPM/ Spds.	Volts	Catalog Number	List	Bearings	Cap MFD	Amps	Shaft N	Base XD	Shell XI	Total C	Stud YM	Ship Wgt.	Notes	OEM
1/6	1075/4	115	5825	\$140	Slv	4.0	2.2	6.0	4.6	4.1	11.1	1.5	11	6	
	1075/4	208-230	5826	\$141	Slv	5.0	1.1	6.0	4.6	4.1	11.1	1.5	11	6	
1/4	1075/4	115	5830	\$141	Slv	5.0	3.8	6.0	4.9	4.4	11.4	1.5	12	6	
	1075/4	208-230	5831	\$145	Slv	5.0	1.8	6.0	4.9	4.4	11.4	1.5	12	6	
1/3	1075/4	115	5835	\$159	Slv	7.5	4.6	6.0	5.4	4.9	11.9	1.5	13	6	
	1075/4	208-230	5836	\$160	Slv	6.0	2.3	6.0	5.2	4.7	11.7	1.5	13	6	
1/2	1075/4	115	5840	\$171	Slv	7.5	7.1	6.0	5.8	5.3	12.4	1.5	19	6	
	1075/4	208-230	5841	\$183	Slv	7.5	3.3	6.0	5.6	5.1	12.2	1.5	19	6	
3/4	900/4	115	1125	\$289	Slv	10.0	11.9	4.0		6.6	10.6		20	5, 7	IC
	1075/4	115	5845	\$227	Slv	15.0	10.6	6.0	6.2	5.7	12.7	1.5	20	6	
	1075/4	115	3275	\$246	Ball	40.0	10.0	2.5	5.9	5.4	8.9		17	8	LE
	1075/4	115	5463	\$272	Ball	15.0	10.6	5.0	-	5.8	10.8		20	7, 9	RH
	1075/4	208-230	5846	\$239	Slv	10.0	5.1	6.0	6.2	5.7	12.7	1.5	20	6	
1	1100/4	208/230	4670	\$277	Slv	20.0	6.0	5.0		6.3	11.3		20	5, 7, 10	IC

IC = ICP LE = Lennox RH = Rheem YK = York

Note 1 50" Line Leads
 Note 3 Includes Capacitor Unmounted
 Note 5 Band Mount

Note 6 2.25" Dia. Hub Rings With Kit For 2.5" Included
 Note 7 Not Economizer®
 Note 8 2.5" Hub Rings

Note 9 Includes 4 Holes In Shell For Rheem Mount
 Note 10 Non-Reversible

† All non-Emerson Electric Co. marks shown within this document are properties of their other respective owners.