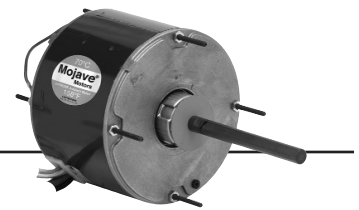


Permanent Split Capacitor MOJAVE™ Series Condenser Fan 5.6" Diameter, Totally Enclosed Air Over (TEAO)

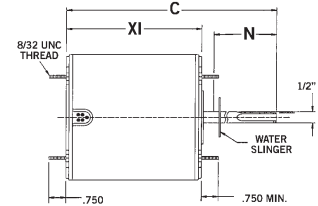


APPLICATIONS:

Residential and commercial condensing unit fan motors in extreme temperature locations.

FEATURES:

- 158°F (70°C) Ambient Design
- Ball Bearings Have All Angle Thrust System
- Class F Insulation
- Designed For Use With 370V Capacitors
- Extended Studs
- 48° Leads
- Hubless Lead End
- Drain Holes Both Ends
- Reversible Rotation
- Automatic Reset Thermal Overload Protector
- Continuous Duty
- **Discount Symbol: DS-3HAC**



Stud Mount, Without Capacitor, Extreme High Ambient Design, All Angle Mount

	HP	RPM/ Spd.	Volts	Catalog Number	List Price	Bearings	Cap. MFD	Amps	Shaft N	Shell XI	Total C	Ship Wgt.	Notes
NEW!	1/8	825	208-230	1872H	\$160	Ball	5.0	0.78	6.0	4.3	10.6	13.7	
	1/4-1/8	825	208-230	1874H	\$173	Ball	5.0	2.1	6.0	4.4	10.9	13.0	1
NEW!	1/6	825	208-230	1873H	\$172	Ball	5.0	1.2	6.0	4.3	10.6	17.0	
NEW!		1075	208-230	1859H	\$115	Ball	5.0	1	5.0	4.0	9.4	18.1	
	1/4	1075	208-230	1860H	\$113	Ball	5.0	1.7	6.0	4.1	10.6	12.0	
NEW!	1/3	1075	208-230	1861H	\$119	Ball	7.5	2.1	6.0	4.6	11.1	14.0	
		825	208-230	1875H	\$196	Ball	7.5	2.4	6.0	5.3	11.6	17.0	
NEW!	1/2	1075	208-230	1862H	\$133	Ball	10.0	3.2	6.0	5.3	11.9	18.0	
		825	208-231	1870H	\$250	Ball	10.0	3.3	6.0	6.1	12.4	17.0	
	3/4	1075	208-230	1868H	\$162	Ball	10.0	4.7	6.0	5.8	12.4	20.0	

460 Volt

	HP	RPM/ Spd.	Volts	Catalog Number	List Price	Bearings	Cap. MFD	Amps	Shaft N	Shell XI	Total C	Ship Wgt.	Notes
NEW!	1/4	1075	460	3736H	\$248	Ball	7.5	0.8	6	4.8	11.1	18.1	
NEW!	1/3	1075	460	3737H	\$282	Ball	7.5	1.3	6	5.6	11.9	18.1	
NEW!	1/2	1075	460	3738H	\$291	Ball	10	1.5	6	5.8	12	18.1	
NEW!	3/4	1075	460	3742H	\$327	Ball	10	2	6	6.6	12.9	18.1	

See Page 173 for Additional Rescue® MOJAVE™ Ratings.

Note 1 Includes 4 Holes With Screws In Shell For Rheem®† Mount

† All non-Emerson Electric Co. marks shown within this document are properties of their other respective owners.