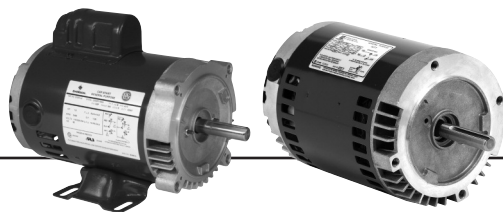


General Purpose Single Phase Open Dripproof (ODP), C-Face, Capacitor Start



APPLICATIONS:

For air compressors, commercial duty pumps, conveyors, blowers and general industrial equipment.

FEATURES:

- Double Shielded Ball Bearings – Locked Drive End Bearings
- 50/60 Hz Motors Have 1.0 SF on 50 Hz
- Class B Insulation
- Continuous Duty
- 40°C Ambient
- F1 Assembly
- Reversible Rotation

Footed

HP	RPM	Voltage	Frame	Catalog Number	List	Discount Symbol	SF	"C" Dim. (inches)	Ship Wt. (lbs.)	Full Load Amps	Notes
1/3	3600	115/208-230	56C	EC0332B	\$214	DS-3FMP	1.75	10.8	17	6.2/2.9-3.1	24, 98
1/2	1800	115/208-230	56C	D12C2JC	\$454	DS-3FMP	1.25	11.0	22	9.0/4.3-4.5	25
	1800	115/208-230	56C	EC0504B	\$456	DS-3FMP	1.25	10.4	22	8.9/4.4-4.5	24
3/4	1800	115/208-230	56C	D34C2JC	\$554	DS-3FMP	1.25	11.0	26	11.4/5.7-5.7	25
1	1800	115/208-230	56C	EC1004B	\$615	DS-3FMP	1.15	11.6	31	15.2/7.7-7.6	
1-1/2	3600	115/208/230	56HC	D32C1JHC	\$508	DS-3FMP	1.15	11.9	32	18.6/9.8-9.3	25
	1800	115/208-230	145TC	D32C2J14C	\$670	DS-3FMP	1.15	13.0	43	19.2/10.0-9.6	25
2	3600	115/208-230	56C	EC2002B	\$620	DS-3FMP	1.20	12.4	33	19.6/10.7-9.8	18, 98
	1800	115/208-230	56HC	D2C2JHC	\$782	DS-3FMP	1.15	13.0	41	20.0/11.3-10.0	18, 25

Footless

HP	RPM	Voltage	Frame	Catalog Number	List	Discount Symbol	SF	"C" Dim. (inches)	Ship Wt. (lbs.)	Full Load Amps	Notes
1/3	1800	115/208-230	56C	D13C2JCR	\$339	DS-3FMP	1.35	10.4	20	6.4/3.2	25
1/2	3600	115/208-230	56C	EC0502	\$280	DS-3FMP	1.60	11.2	17	8.2/4.2-4.1	24, 98, PF
	1800	115/208-230	56C	EC0504	\$453	DS-3FMP	1.25	11.0	20	8.9/4.4-4.5	24, PF
	1800	115/208-230	56C	D12C2JCR	\$398	DS-3FMP	1.25	10.4	20	9.0/4.3-4.5	25
3/4	3600	115/208-230	56C	EC0752	\$350	DS-3FMP	1.50	11.9	18	10.4/5.4-5.2	24, 98, PF
	1800	115/208-230	56C	D34CA2JCR	\$552	DS-3FMP	1.25	11.0	26	11.4/5.7-5.7	24
1	3600	115/208-230	56C	EC1002	\$404	DS-3FMP	1.40	12.2	20	12.8/6.7-6.4	24, 98, PF
	1800	115/208-230	56C	D1C2JCR	\$530	DS-3FMP	1.25	10.9	22	14.8/7.5-7.3	25
1-1/2	3600	115/208-230	56C	EC1502	\$490	DS-3FMP	1.30	12.4	30	18.2/9.2-9.1	24, 98, PF
	1800	115/208-230	56C	D32C2JCR	\$555	DS-3FMP	1.15	12.4	39	19.2/10.0-9.6	25
	1800	115/208-230	56C	D32CA2JCR	\$594	DS-3FMP	1.15	12.4	39	20.4/10.0-10.2	24
2	3600	115/208-230	56C	EC2002	\$618	DS-3FMP	1.20	12.4	32	19.6/10.7-9.8	18, 98, PF
	1800	115/208-230	56C	D2CA2JCR	\$831	DS-3FMP	1.15	14.0	40	20.0/11.3-10.0	18, 24
3	3600	208-230	56C	EC3002	\$700	DS-3FMP	1.15	12.9	37	14.0-12.8	18, 24

Note 18 Incorporates Run Capacitor
 Note 24 Automatic Reset Thermal Overload Protector
 Note 25 Non-protected

Note 98 50/60 Hz Motor
 Note PF Pump and Fan Duty Only.
 Additional Pump Motor Offerings are Available on Pages 225-282

*Drip Cover Kits sold in multiples of three: DC48 List/Ea. \$18, DS-3TE; DC56 List/Ea. \$18, DS-3TE



DRIVES
 BRAKE MOTORS
 GENERAL PURPOSE SINGLE PHASE
 HVAC
 WASH/DOWN
 AGRICULTURE
 COMMERCIAL PUMP MOTORS
 CLOSE COUPLED PUMP MOTORS
 FIRE PUMP MOTORS
 POOL & SPA MOTORS
 RESIDENTIAL WATER PUMP
 ELEVATOR AND GATE & DOOR