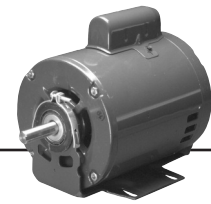


Capacitor Start Belted Fan & Blower

Open Dripproof, Resilient Base

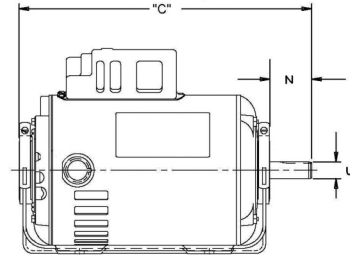


APPLICATIONS:

Designed to meet manufacturer's requirements for belted fans and blowers.

FEATURES:

- 40°C Ambient
- Class A Insulation
- Reversible Rotation
- Suitable For All Angle Operation (Within Blower Housing)
- Automatic Reset Thermal Overload Protector (unless noted)
- Threaded Conduit Hole, Except 299
- **Discount Symbol: DS-3HAC**



HP	RPM	Volts	Catalog Number	List	Bearings	NEMA Frame	Amps	Shaft N	Shaft U	Protector	Total C	SF	Ship Wgt.	Notes
1/3	1725	115/208-230	180	\$251	Slv	48	6.0/3.0	1.5	.500	Auto	9.9	1.35	20	
	3450	115/208-230	298	\$299	Slv	48	8.6/4.3	1.5	.500	Auto	9.9	1.25	16	
	1725	115/208-230	1790	\$317	Slv	56	7.4/3.7	1.9	.625	Auto	9.3	1.25	22	
3/4	3450	115/208-230	430	\$316	Slv	48	9.2/4.6	1.5	.500	Auto	10.4	1.25	22	
	1725	115/208-230	1893	\$389	Ball	56	11.4/5.7	1.9	.625	Auto	10.8	1.25	27	
1	3450	115/208-230	431	\$344	Slv	48Z	11.6/5.8	1.9	.625	Auto	11.3	1.25	22	
	1725	115/230	3187C	\$417	Slv	56	14.0/7.0	1.9	.625	Auto	11.8	1.25	29	80
	1725	115/208-230	1769	\$476	Ball	56	14.0/7.0	1.9	.625	Auto	11.8	1.25	30	
1-1/2	3450	115/230	299	\$464	Ball	56	17.0/8.5	1.9	.625	Auto	11.9	1.15	32	
	1725	115/208-230	4242	\$514	Ball	56	22.4/11.2	1.9	.625	Auto	12.8	1.15	35	

Note 80 Canadian Standard — Connected CCWLE (Reversible)

